

2023 Bond Schematic Design: JHS Package 2 CTE Wing & Gym



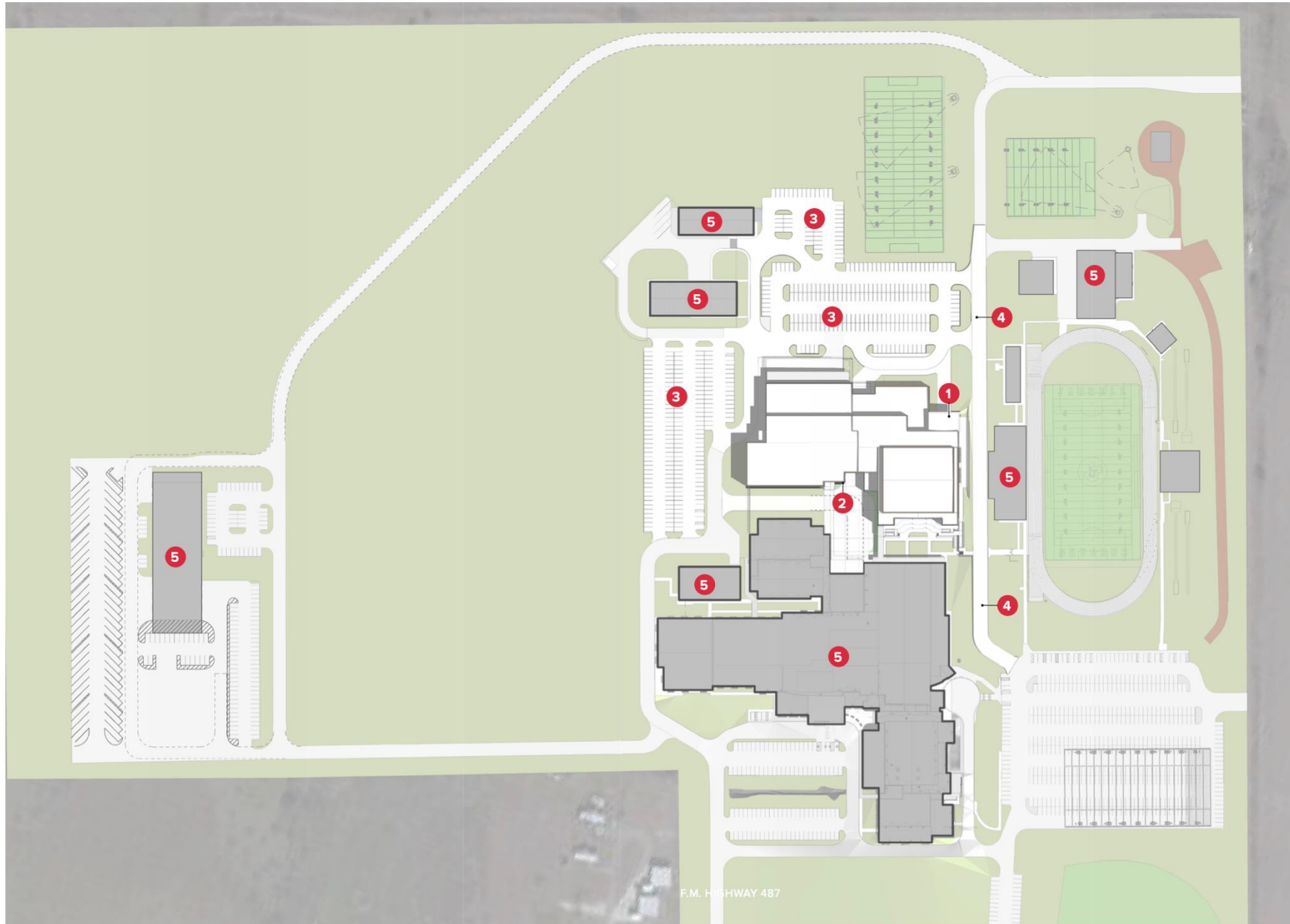
**Prepared By:
Sledge Engineering and Huckabee**

Board Meeting
September 18, 2024



Base Bid





COLOR LEGEND

- PAVEMENT/SIDEWALK/ROADS
- GRASS
- EXISTING PLAYING FIELDS
- NEW BUILDINGS
- EXISTING BUILDINGS

SITE PLAN KEY

- 1 ATHLETICS PLAZA/ENTRY
- 2 STUDENT ENTRY
- 3 NEW PARKING
- 4 WIDEN DRIVE TO TWO-WAY
- 5 EXISTING BUILDINGS

SITE PLAN STATISTICS

NEW BUILDING AREA:
CTE/ATHLETICS BUILDING 143,800SF



Huckabee

JARRELL HIGH SCHOOL ADDITIONS & RENOVATIONS - CTE, ATHLETICS | ANNEX | JARRELL INDEPENDENT SCHOOL DISTRICT

NOT FOR REGULATORY APPROVAL, PERMITTING OR CONSTRUCTION. DANIEL DAIN TX #25671

SITE PLAN - WITH PLAZA DESIGN

COLOR LEGEND

ADMINISTRATION

ADMINISTRATION SUPPORT

CIRCULATION

FINE ARTS

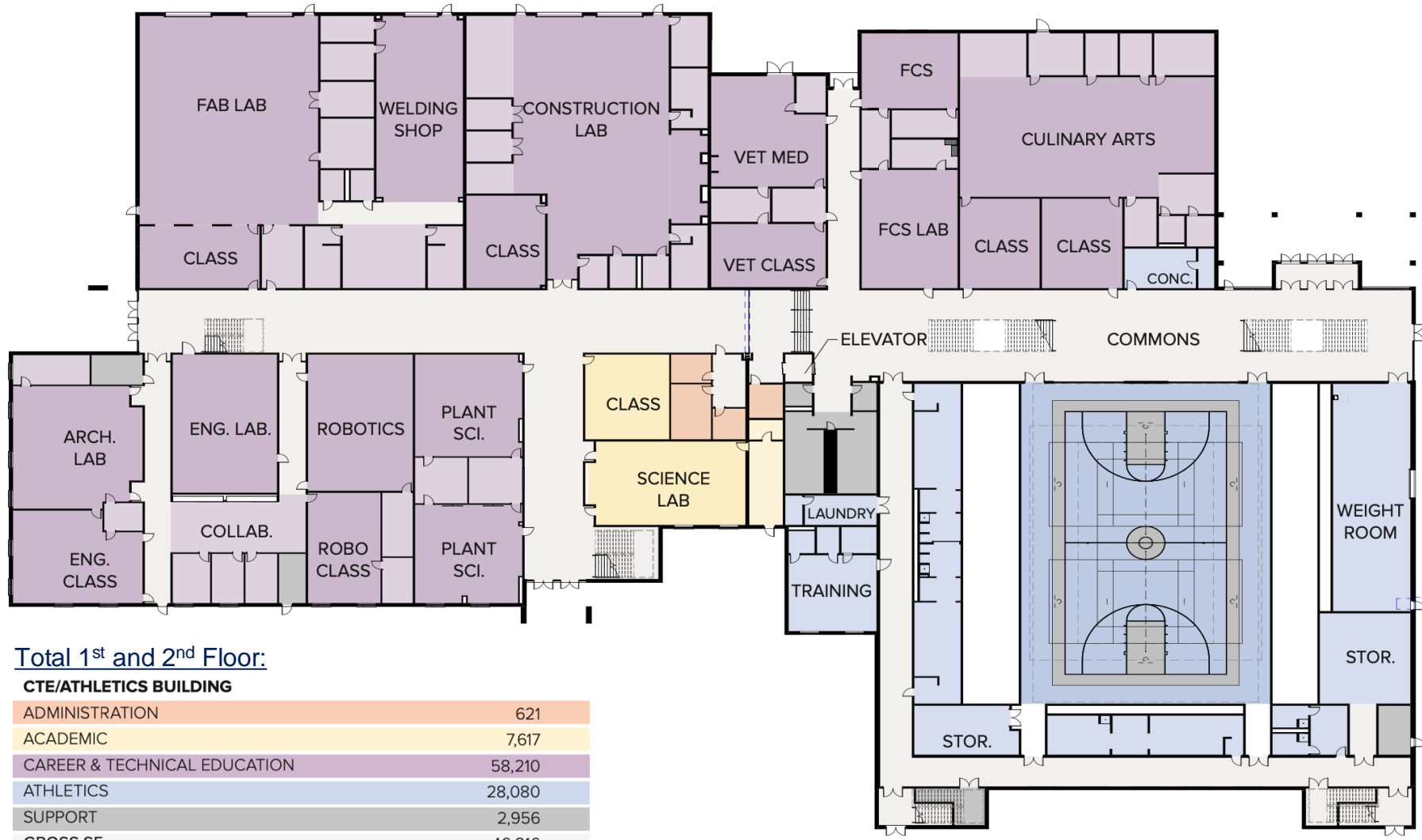
FINE ARTS SUPPORT

LIBRARY

LIBRARY SUPPORT

CTE

SUPPORT SPACE



Total 1st and 2nd Floor:

CTE/ATHLETICS BUILDING

ADMINISTRATION	621
ACADEMIC	7,617
CAREER & TECHNICAL EDUCATION	58,210
ATHLETICS	28,080
SUPPORT	2,956
GROSS SF	46,316
TOTAL	143,800 GSF



OVERALL FIRST FLOOR - CTE/ATH - WITH SCIENCE LABS

Huckabee

JARRELL HIGH SCHOOL ADDITIONS & RENOVATIONS - CTE, ATHLETICS | ANNEX | JARRELL INDEPENDENT SCHOOL DISTRICT

NOT FOR REGULATORY APPROVAL, PERMITTING OR CONSTRUCTION. DANIEL DAIN TX #25671

COLOR LEGEND

ADMINISTRATION

ADMINISTRATION SUPPORT

CIRCULATION

FINE ARTS

FINE ARTS SUPPORT

LIBRARY

LIBRARY SUPPORT

CTE

SUPPORT SPACE





Huckabee

JARRELL HIGH SCHOOL ADDITIONS & RENOVATIONS - CTE, ATHLETICS | ANNEX | JARRELL INDEPENDENT SCHOOL DISTRICT
NOT FOR REGULATORY APPROVAL, PERMITTING OR CONSTRUCTION. DANIEL DAIN TX #25671

ATHLETICS ENTRY
EXTERIOR PERSPECTIVES



Huckabee

JARRELL HIGH SCHOOL ADDITIONS & RENOVATIONS - CTE, ATHLETICS | ANNEX | JARRELL INDEPENDENT SCHOOL DISTRICT
NOT FOR REGULATORY APPROVAL, PERMITTING OR CONSTRUCTION. DANIEL DAIN TX #25671

SOUTH ENTRY
EXTERIOR PERSPECTIVES



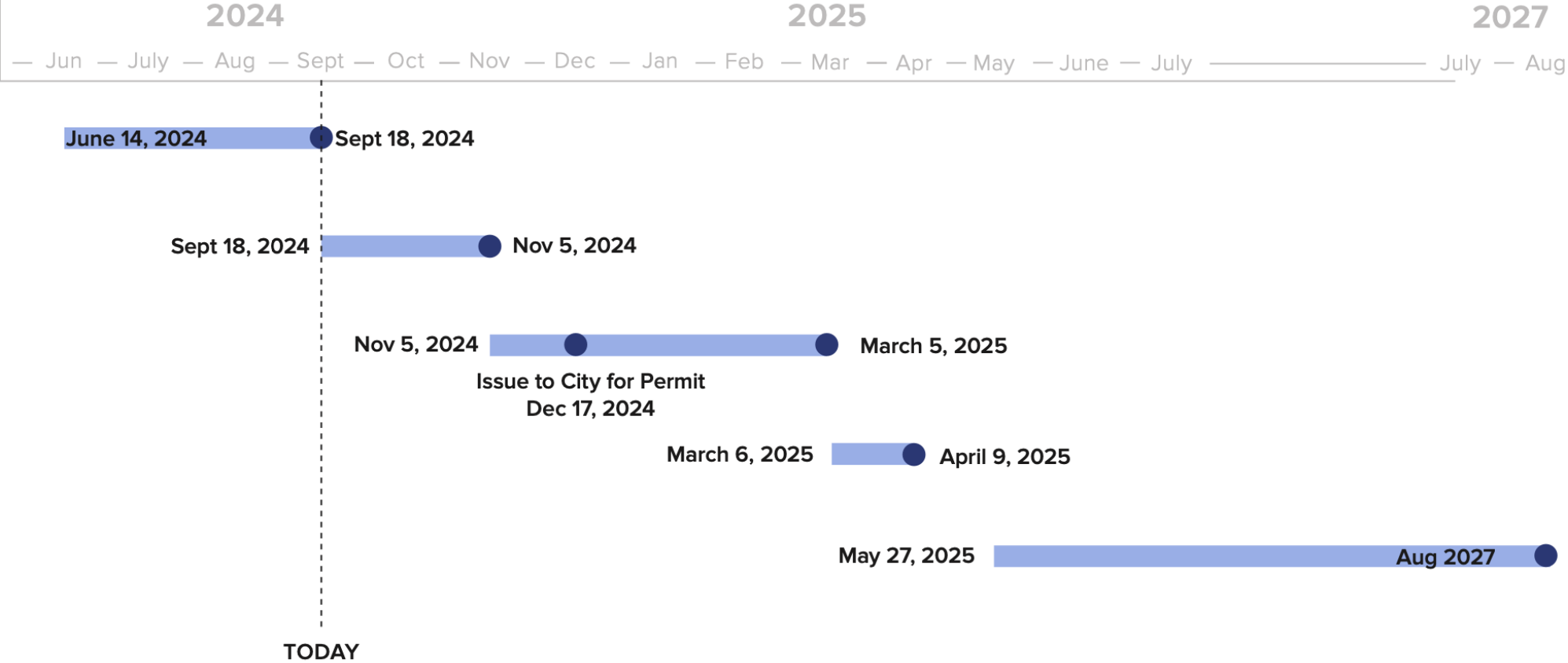
Huckabee

JARRELL HIGH SCHOOL ADDITIONS & RENOVATIONS - CTE, ATHLETICS | ANNEX | JARRELL INDEPENDENT SCHOOL DISTRICT

NOT FOR REGULATORY APPROVAL, PERMITTING OR CONSTRUCTION. DANIEL DAIN TX #25671

COURTYARD
EXTERIOR PERSPECTIVES

PROJECT DATES
Schematic Design
Design Development Building Package
Construction Documents Building Package
Bidding & Permitting
Construction



Construction Budget

1. Construction “Base Bid” Estimate = \$65,800,000

2. Bid Alternates identified = \$3,800,000

3. Construction Budget = **\$62,000,000**

(American Constructors is “Construction Manager at Risk”)

Other:

1. Interior remodel of JHS for existing CTE spaces to convert to general education spaces will be **Package 3** (2027-2028)

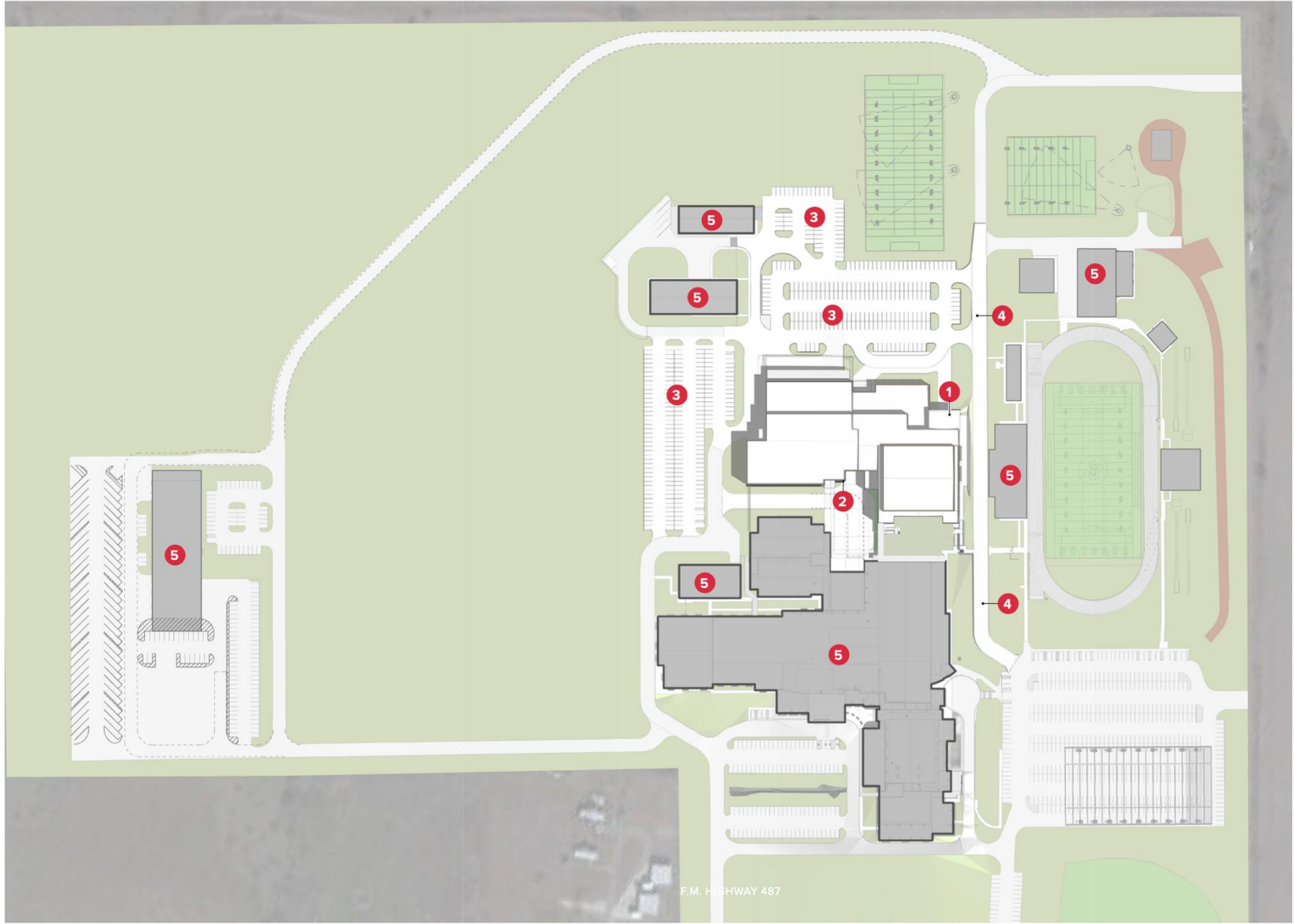
\$2,000,000 (plan to use “return savings” for unused contingency from existing projects at JRMS, Ops, & BCES)

2. Roof / Solar for “original” JHS portions of buildings = **\$4,000,000** (assuming stand alone project – not bond)

Bid Alternates

(Courtyard and General Ed / Science Classrooms in future phase)





COLOR LEGEND

- PAVEMENT/SIDEWALK/ROADS
- GRASS
- EXISTING PLAYING FIELDS
- NEW BUILDINGS
- EXISTING BUILDINGS

SITE PLAN KEY

- 1 ATHLETICS PLAZA/ENTRY
- 2 STUDENT ENTRY
- 3 NEW PARKING
- 4 WIDEN DRIVE TO TWO-WAY
- 5 EXISTING BUILDINGS

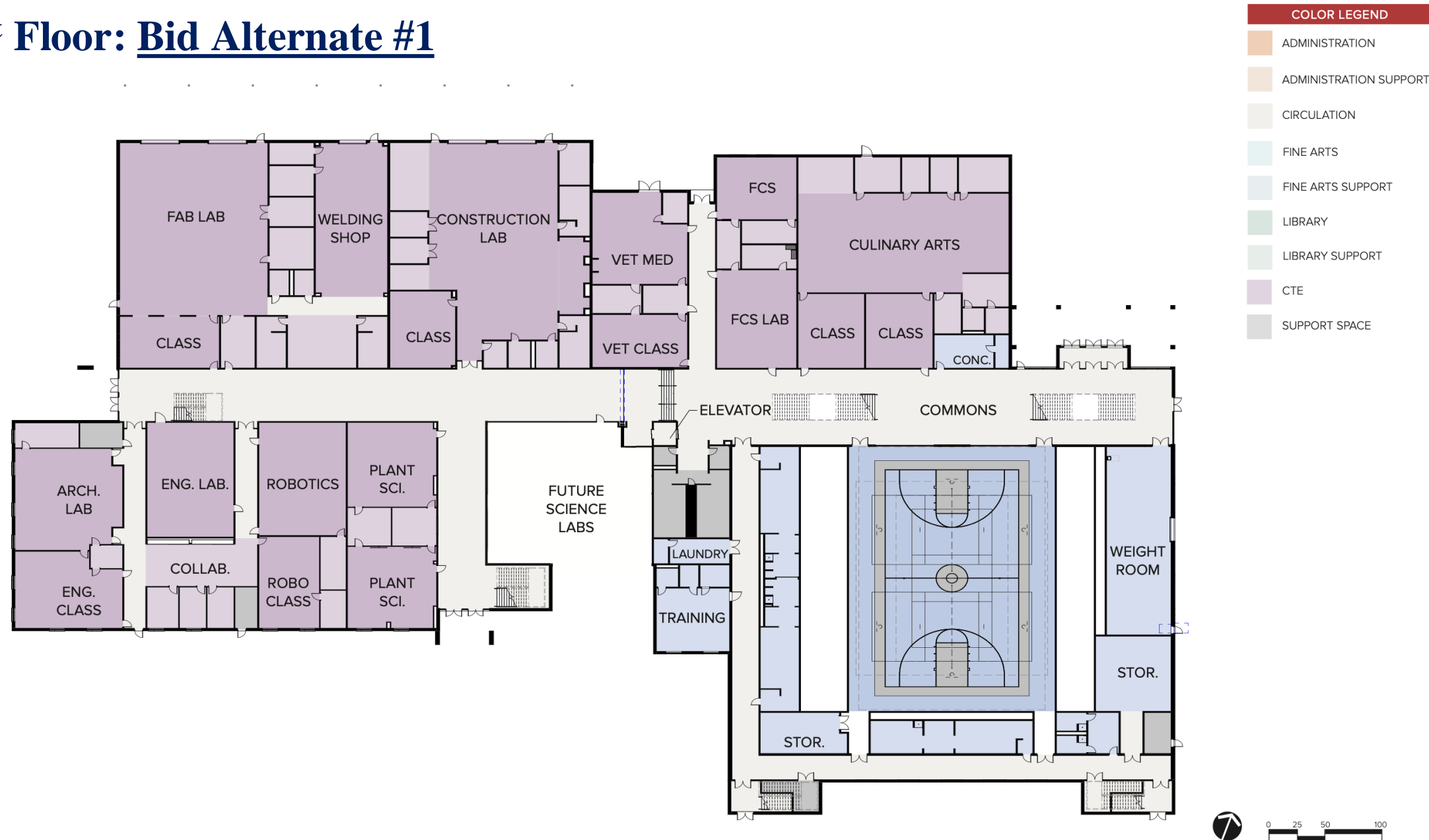
SITE PLAN STATISTICS

NEW BUILDING AREA:

CTE/ATHLETICS BUILDING	143,800SF
------------------------	-----------



1st Floor: Bid Alternate #1

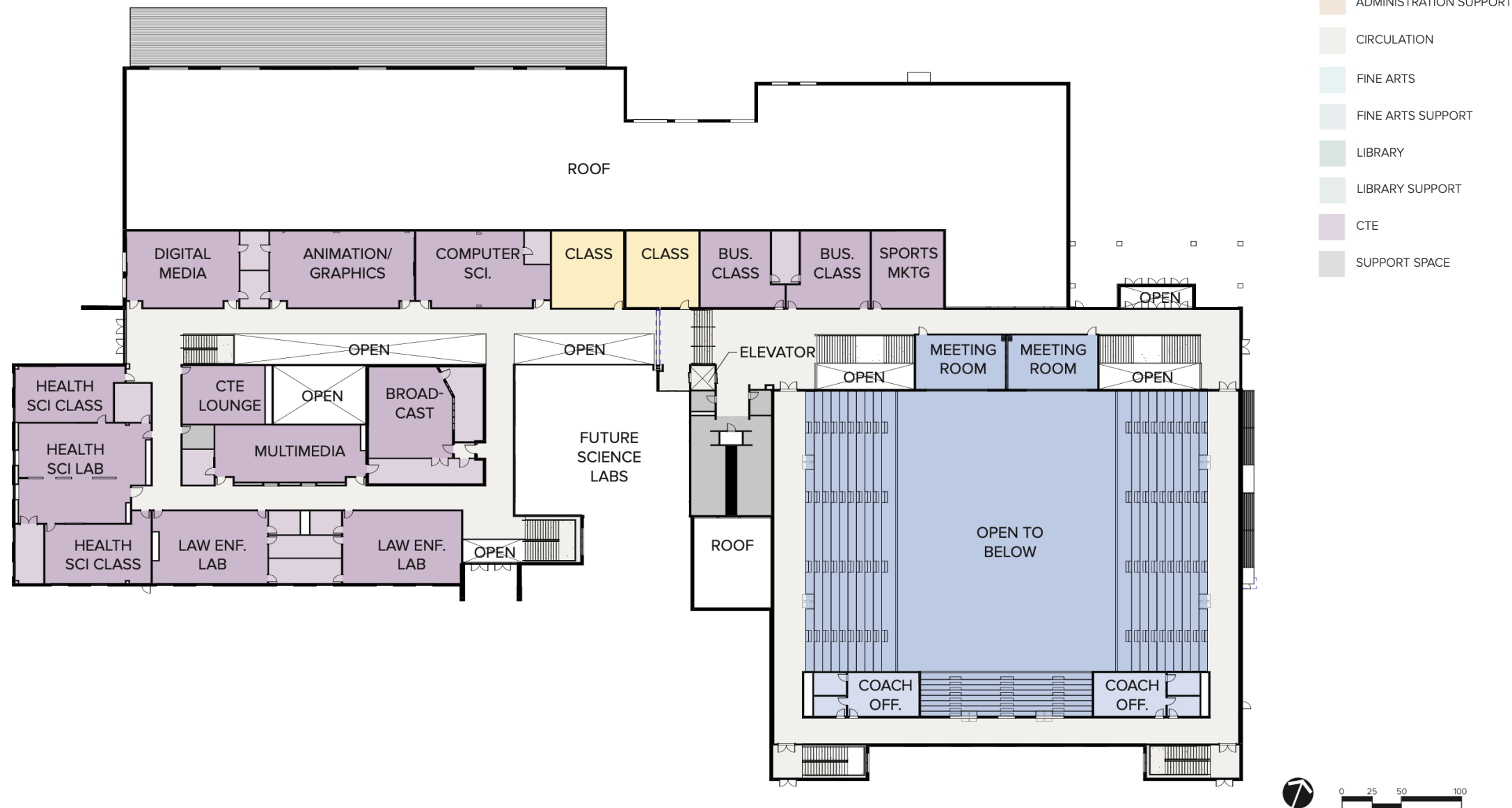


Huckabee

JARRELL HIGH SCHOOL ADDITIONS & RENOVATIONS - CTE, ATHLETICS | ANNEX | JARRELL INDEPENDENT SCHOOL DISTRICT
NOT FOR REGULATORY APPROVAL, PERMITTING OR CONSTRUCTION. DANIEL DAIN TX #25671

OVERALL FIRST FLOOR - CTE/ATH - FUTURE SCIENCE LABS

2nd Floor: Bid Alternate #1



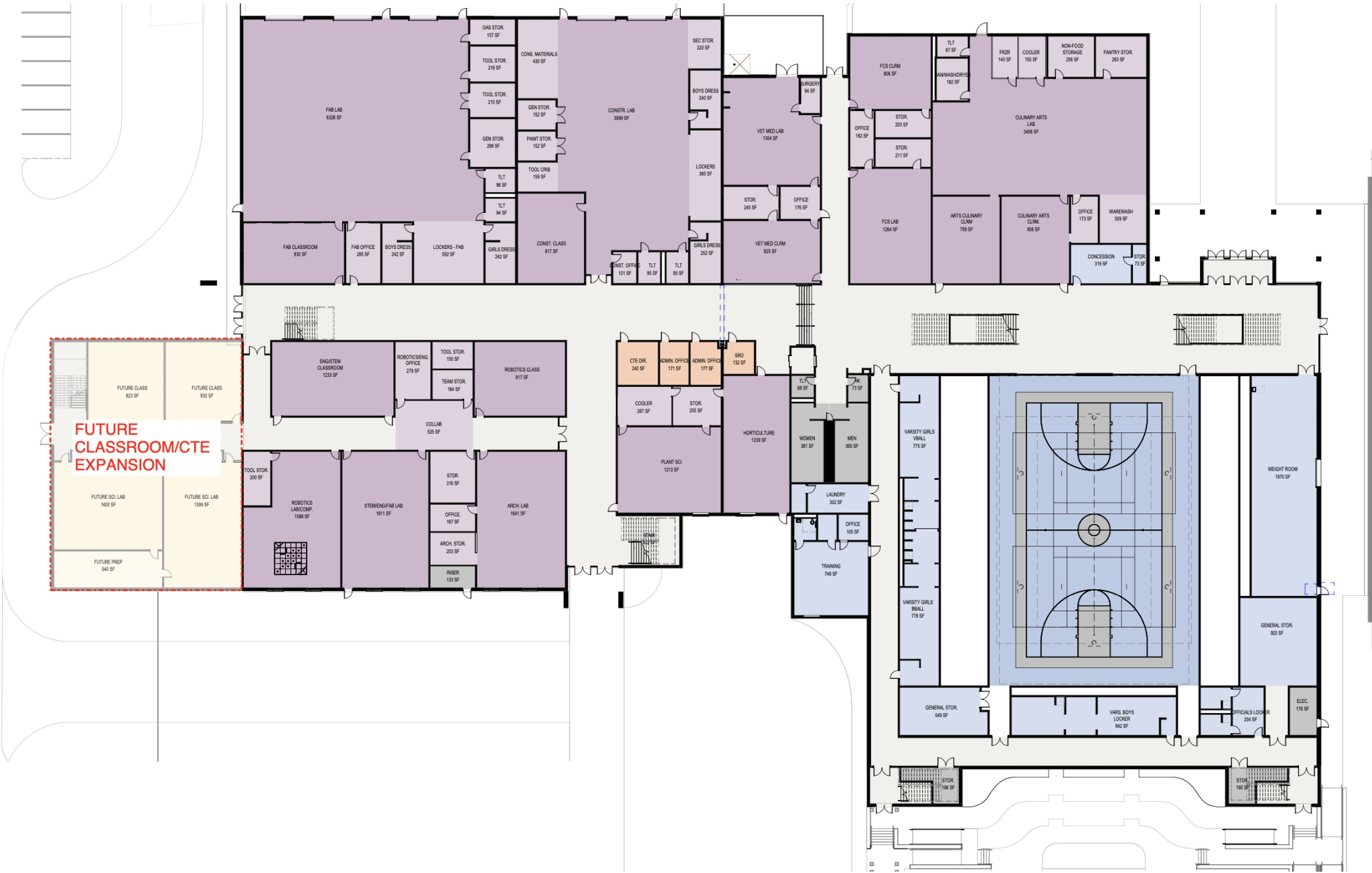
Huckabee

JARRELL HIGH SCHOOL ADDITIONS & RENOVATIONS - CTE, ATHLETICS | ANNEX | JARRELL INDEPENDENT SCHOOL DISTRICT

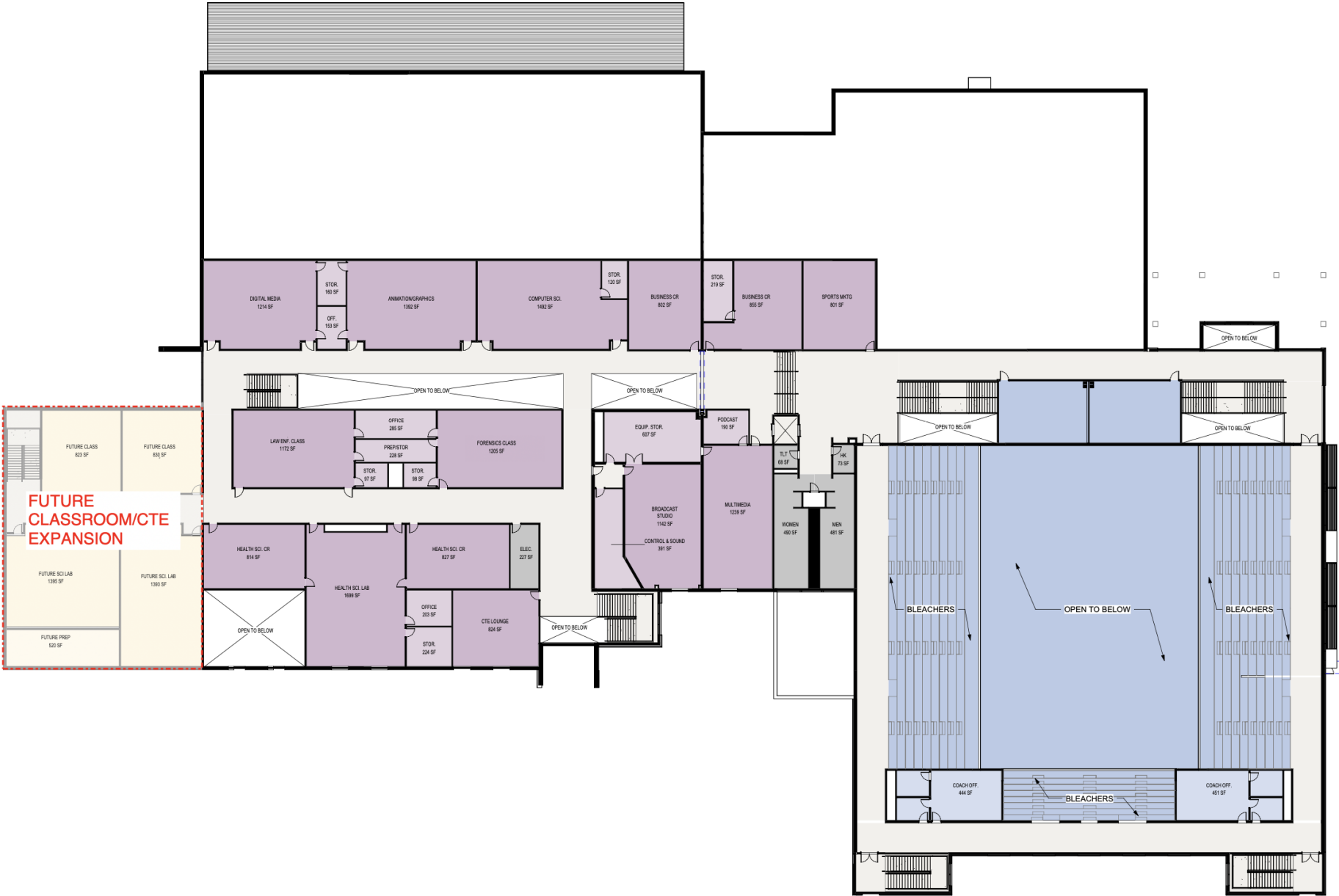
NOT FOR REGULATORY APPROVAL, PERMITTING OR CONSTRUCTION. DANIEL DAIN TX #25671

OVERALL SECOND FLOOR - CTE/ATH - FUTURE SCIENCE LABS

1st Floor: Bid Alternate #2



2nd Floor: Bid Alternate #2



TEA Compliance

* See JRMS full presentation on options
presented on 09/06/2023

** Recommendations for JHS CTE follow





New TEA Requirements

- New school Safety & Facilities Standards, require district compliance.
 - Effective November 1, 2021
- Instructional and operational practices - Two methods of compliance for adequacy of space for instructional facilities
 - Quantitative & Qualitative Methods of Instructional Delivery



Quantitative Method

- Majority of Texas School Districts
- Based on 8 period school day
- Learning led and facilitated by the instructor
- Teachers own the classroom
- Majority of learning takes place in the classroom space
- May have innovative learning approaches, but based on traditional learning models
- Hybrid model between traditional and innovative





Flexibility Levels Defined

Flexibility Level 2

- Single, fixed presentation space;
- Access to outdoors limited and challenging, but outdoor spaces may be visible from classrooms;
- Furniture includes detached student desk/chair with very infrequent rearrangement;
- Moderate multipurpose functionality for walls
- Teacher-centric digital instruction with moderate access to mobile devices.